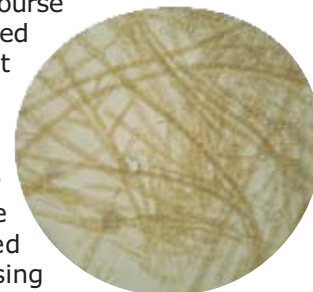


Seaweed Identification Workshop, March 2006

ERT's Jonathan Hunt (Senior Marine Biologist) and Kirsty McWilliam (Environmental Consultant) joined a wide range of participants on the seaweed identification course which included staff from the Scottish Environment Protection Agency (SEPA), Environment Agency (EA) and Environment & Heritage Services (EHS) together with representatives from several other consultancies. The skills gained during the course enables ERT to enhance its already experienced shore monitoring & mapping survey capabilities within the company.



Although not directly designed to be an insight into the seaweed requirements of the Water Framework Directive (WFD) (which have yet to be formally adopted), the course gave an introduction to the skills required to compose a full seaweed species list for any given shore together with a background on the biology of algae and how to use professional literature to aid in their identification. All four of the tutors present during the workshop are currently the seaweed



specialist members of the Marine Plants Task Team for UK and RoI for devising classification tools for the WFD.

Dangerous Goods

To ensure that ERT complies with all current legislation when transporting goods such as produced water kits, samples following surveys and all chemicals, two members of staff from the company attended Dangerous Goods

The courses covered all aspects regarding the transportation of dangerous goods, from the type and labeling of packaging, quantities allowed, and special provisions, to the documentation that is required.



courses covering all modes of transportation. Chris Wilson from our chemistry department completed the CAA approved Dangerous Goods by Air course and Ruth Webster from our biology department attended a condensed Dangerous Goods by Land and Sea course.



Marine Environmental Consultants



ERT Staff Provide Survey Support

ERT marine scientists were once again supporting our clients' requirements in January this year through the provision of environmental survey representatives for two geotechnical/geophysical surveys in the southern North Sea aboard the MV Seaway Petrel and MV Multtraship Commander.

The clients' required environmental expertise advising on the potential presence of *Sabellaria* in their intended development areas. In overseeing the environmental components for these projects ERT staff supported identification of areas of concern and advised on locations requiring ground-truthing by photography/grab sampling for the presence/absence of *Sabellaria* reefs.

Though the main focus of these environmental surveys was the identification of *Sabellaria* reefs, they also involved grab sampling operations to collect benthic samples for environmental biological/chemical analysis.

Following the surveys further scientific support was required by the client in reviewing the progress and quality of work undertaken by the contracted company (DDH Consulting A/S) against the client's



scope as well as advising on reporting requirements for this type of study. This involved an inspection visit to their premises in Roskilde, Denmark which was followed up with a visit report to the client detailing the status of work and actions required to complete the work programme and advice on presenting the results to the required standard.

News Update

- The first Irish offshore strategic environmental assessment to be undertaken by the Irish government and prepared by ERT (Scotland), has recently completed the public consultation phase. The final environmental report will be completed in June.
- Our pool of internal auditors for ISO 9001:2000 has now increased by five.
- ERT will be presenting on the IOSEA at the *Exploring Atlantic Ireland* conference in November 2006.
- We are currently completing environmental impact assessment reports for exploration in the Andaman Sea for Petronas Carigali Myanmar II Inc.

ERT (Scotland) Ltd, Research Park South
Heriot-Watt University, Edinburgh, EH14 4AP
Tel: +44 (0)131 449 5030
Fax: +44 (0)131 449 5037
enquiries@ert.co.uk

Marine Environmental Consultants



INVESTOR IN PEOPLE



www.ert.co.uk